



Weidelstr. 51
A-1100 Vienna/Austria
Tel.: +43-1-6894700-0
Fax: +43-1-6894700-40
Email: office@demmel.com
Internet: www.demmel.com

Press Release

demmel products gmbh

Simulation of Intelligent Displays is now Part of the free iLCD Manager

Vienna/Munich, February 23, 2016 - demmel products again presents a unique feature at the embedded world. The iLCD Simulator which is part of the latest iLCD Manager XE version allows evaluation of any iLCD panel without the need for a real existing one.

Early stage user interface evaluation is a decisive factor for ensuring the fastest possible development process and time-to-market. So that customers and prospects can see in advance what their iLCD screen designs will look like, demmel has launched the iLCD Simulator with which they can now simulate the iLCD's behavior directly in the [iLCD Manager XE](#).

With the iLCD Simulator, the appearance and functionality of a graphical user interface can be tested before the first prototype with a "real" iLCD exists. Simulation is also helpful in advanced development stages for project updates which, with a "virtual" iLCD panel, can now be uploaded and tested considerably faster. The iLCD Simulator includes all currently available panels and behaves exactly as would a "real" panel with all its interfaces, inputs and outputs. There are no special measures to be taken for simulation. No changes are required to transfer an iLCD project from the simulator to the hardware or vice versa. The touch fields are activated by a mouse click, which implies the capacitive multi-touch panels running in single touch mode.

The iLCD Simulator's control menu includes many features such as iLCD model selection, iLCD input configuration and "virtual" panel rebooting. The status line shows the current digital output and relay/PWM output states as well as the display brightness.

After the simulation, the project file can be stored on the iLCD and the hardware can be connected. This way the user interface runs under real conditions. Evaluation kits are available with all iLCD models for trial, test and prototyping allowing for a quick and easy start.

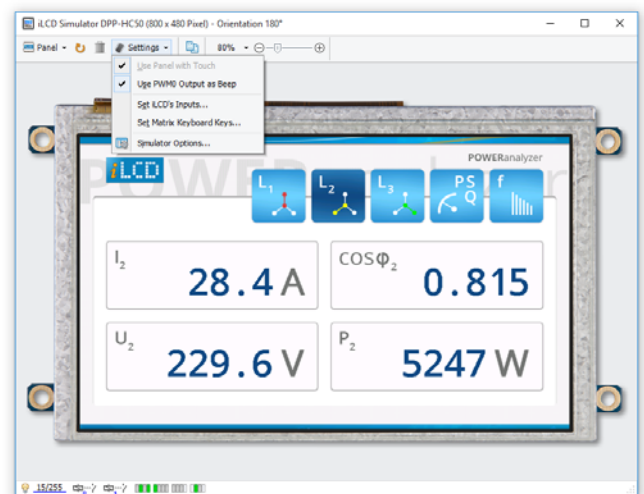
Both simulated and live versions of the iLCD product line will be presented at the [embedded world 2016](#) (February 23 - 25) in Nuremberg. demmel products looks forward to your visit at **booth 371 in hall 1**.

About demmel products gmbh:

demmel products – since 1988 our company has become synonymous with excellence in the design and development of innovative solutions in both the hard and the software sector. We develop, produce and distribute state-of-the-art technology to make users' lives simpler, safer and more comfortable.

With our "Next Generation Intelligent LCDs", we are the global technology leader thanks to continuous development and the continual expansion of our iLCD product line. Using iLCDs cuts costs, time-to-market and complexity. Our customers are enabled to rapidly create and market optimal user interface solutions under competitive conditions.

iLCDs are deployed in a broad range of applications and industries. Our customers come from diverse branches such as machine building, medical devices, electrical engineering or automotive. Our iLCDs can be found in factories, laboratories, intensive care units, access control systems, busses, vehicle charging stations, offshore boats and on oil drilling platforms.



PNG image (RGB):

http://www.demmel.com/download/ilcd/press/iLCD-Simulator_RGB_300dpi.png

TIF image (CMYK):

http://www.demmel.com/download/ilcd/press/iLCD-Simulator_CMYK_300dpi.tif

Press Contact:

Sandra Iris Eilenstein
+49-89-898687 20
ITPR Information-Travels Public Relations
sandra.eilenstein@information-travels.com